



OMNI GEAR®

Right Angle Gear Drives

Creating Value for our Customers
www.OmniGear.com

Model Selection

Feature	Description	Code	Sample
Gear Ratio	6:5 Reducing	65	G3056
	1:1	11	
	5:6 Increasing	56	
Down Thrust	Standard	S	G3056H
	Heavy	H	
HP Rating	40	40	G3056H80
	60	60	
	80	80	
	100	100	
Clutch Sizes*	1"	B0	G3056H80B7
	1 3/16"	B3	
	1 1/4"	B4	
	1 7/16"	B7	
	1 1/2"	B8	
Gear Ratio	3:2 Reducing	32	G5056
	4:3 Reducing	43	
	5:4 Reducing	54	
	6:5 Reducing	65	
	11:10 Reducing	10	
	1:1	11	
	10:11 Increasing	01	
	5:6 Increasing	56	
	4:5 Increasing	45	
	3:4 Increasing	34	
2:3 Increasing	23		
Down Thrust	Standard	S	G5056H
	Heavy	H	
HP Rating	60	60	G5056H80
	80	80	
	100	100	
	125	125	
	150	150	
Clutch Sizes*	1"	B0	G5056H80B7
	1 3/16"	B3	
	1 1/4"	B4	
	1 7/16"	B7	
	1 1/2"	B8	
Gear Ratio	3:2 Reducing	32	G10056
	4:3 Reducing	43	
	5:4 Reducing	54	
	6:5 Reducing	65	
	11:10 Reducing	10	
	1:1	11	
	10:11 Increasing	01	
	5:6 Increasing	56	
	4:5 Increasing	45	
	3:4 Increasing	34	
2:3 Increasing	23		
Down Thrust	Standard	S	G10056H
	Heavy	H	
HP Rating	150	150	G10056H200
	200	200	
	250	250	
	300	300	
Clutch Sizes*	1 1/2"	B8	G10056H200B11
	1 11/16"	B11	
	1 15/16"	B15	

G-30 GEAR CASE

HP Rating	Vertical Shaft RPM	Standard Down Thrust			Heavy Down Thrust	
		HP	lbs.	kgs.	lbs.	kgs.
40	1160	30	4600	2091	6900	3136
	1460	36	4240	1927	6360	2891
	1760	40	4000	1818	6000	2727
	2200	44	3720	1691	5580	2536
60	1160	44	5175	2352	7475	3398
	1460	53	4770	2168	6890	3132
	1760	60	4500	2045	6500	2954
	2200	67	4185	1902	6045	2748
80	1160	59	5750	2614	8050	3659
	1460	71	5300	2409	7420	3373
	1760	80	5000	2273	7000	3182
	2200	89	4650	2114	6510	2959
100	1160	74	8625	3920		
	1460	89	7950	3614	N/A	
	1760	100	7500	3409		
	2200	111	6975	3170		
60	1160	44	6900	3136	9200	4182
	1460	53	6360	2891	8480	3854
	1760	60	6000	2727	8000	3636
	2200	67	5580	2536	7440	3382
80	1160	59	8050	3659	10350	4704
	1460	71	7420	3373	9540	4336
	1760	80	7000	3182	9000	4090
	2200	89	6510	2959	8370	3804
100	1160	74	9775	4443	11500	5227
	1460	89	9010	4095	10600	4818
	1760	100	8500	3864	10000	4545
	2200	111	7905	3593	9300	4227
125	1160	93	10350	4704	12650	5750
	1460	111	9540	4336	11660	5300
	1760	125	9000	4090	11000	5000
	2200	139	8370	3804	10230	4650
150	1160	111	10350	4704	11500	5227
	1460	134	9450	4336	10600	4818
	1760	150	8000	4090	10000	4545
	2200	167	8370	3804	12090	5495
150	1160	111	9200	4182	11500	5227
	1460	134	8480	3854	10600	4818
	1760	150	8000	3636	10000	4545
200	1160	148	11500	5227	14950	6795
	1460	178	10600	4818	13780	6264
	1760	200	10000	4545	13000	5909
250	1160	185	13800	6273	18400	8364
	1460	223	12720	5782	16960	7709
	1760	250	11000	5000	14000	6364
300	1160	222	18400	8364	23000	10454
	1460	267	16960	7709	21200	9636
	1760	300	16000	7273	20000	9091

G-50 GEAR CASE

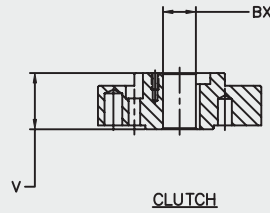
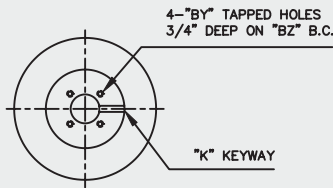
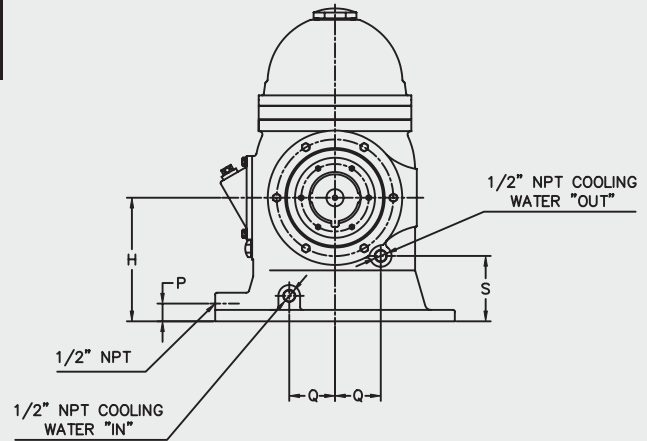
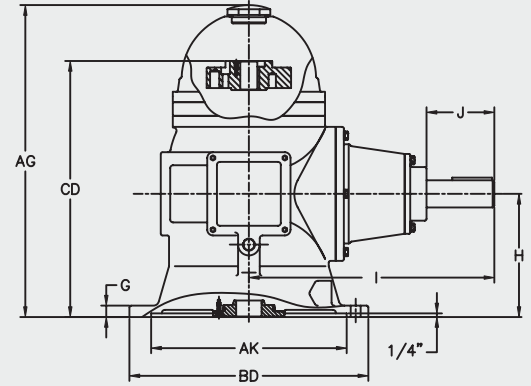
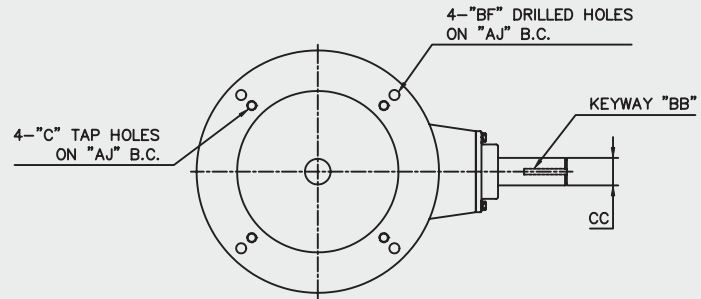
G-100 GEAR CASE

* Other clutch sizes available as special order



Dimensions of Standard Gear Drive

Gear Case	G-30		G-50		G-100	
	in	mm	in	mm	in	mm
AG	21"	533	27"	686	37"	940
AJ	14.750"	375	14.750"	375	18.250"	464
AK	13.501"	343	13.501"	343	13.501"	343
BB	3/8" x 3/16"	10 x 5	5/8" x 5/16"	16 x 3	3/4" x 3/8"	19 x 10
BD	16.500"	419	16.500"	419	20.000"	508
BF	0.688"	17	0.688"	17	0.688"	17
BX max	1"-1/2"	25-13	1"-1/2"	25-13	1"-15/16"	49
BX min	3/4"	19	3/4"	19	1-3/16"	30
C	-	-	-	-	5/8"-11	16-279
CC	1.874"	48	2.249"	57	2.937"	75
CD	17.875"	454	22.625"	575	31.500"	800
G	0.813"	21	0.875"	22	0.875"	22
H	8.500"	216	11.500"	292	13.620"	346
I	17.000"	432	18.000"	457	21.250"	540
J	4.750"	121	5.188"	132	5.875"	149
P	1.250"	32	1.500"	38	2.500"	63
Q	3.125"	79	3.750"	95	4.500"	114
S	4.500"	114	4.625"	117	5.875"	149
V	2.000"	51	2.000"	51	2.500"	63
NET WT	255 lbs	115.67 kg	350 lbs	13.78 kg	750 lbs	29.18 kg
OIL QTS	6		7		13	

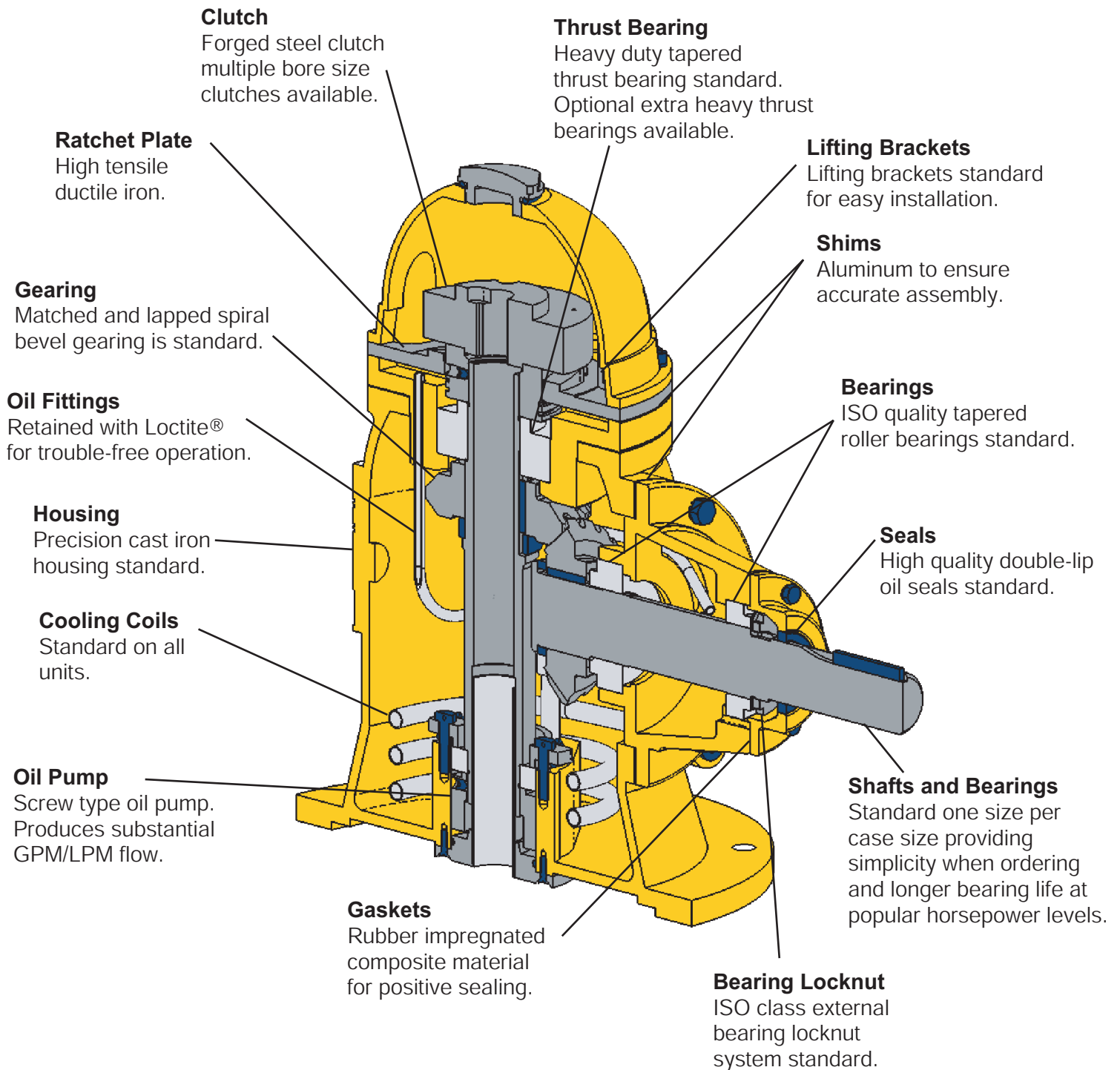


BX'	X'		BY'		BZ'		
	in	mm	in	mm	in	mm	
0.750"	19	3/16" x 3/32"	4.7 x 2.4	10"-32"	245-813	1.375"	35
0.875"	22	1/4" x 1/8"	6.3 x 3.2	10"-32"	245-813	1.375"	35
1.000"	25	1/4" x 1/8"	6.3 x 3.2	10"-32"	245-813	1.375"	35
1.063"	27	1/4" x 1/8"	6.3 x 3.2	10"-32"	245-813	1.375"	35
1.188"	30	1/4" x 1/8"	6.3 x 3.2	1/4"-20"	6.3-508	1.750"	44
1.250"	32	1/4" x 1/8"	6.3 x 3.2	1/4"-20"	6.3-508	1.750"	44
1.438"	37	3/8" x 3/16"	9.5 x 4.8	1/4"-20"	6.3-508	2.125"	53
1.500"	38	3/8" x 3/16"	9.5 x 4.8	1/4"-20"	6.3-508	2.125"	53
1.688"	43	3/8" x 3/16"	9.5 x 4.8	1/4"-20"	6.3-508	2.500"	64
1.750"	44	3/8" x 3/16"	9.5 x 4.8	1/4"-20"	6.3-508	2.500"	64
1.938"	49	1/2" x 1/4"	12.7 x 6.4	1/4"-20"	6.3-508	2.500"	64
2.000"	51	1/2" x 1/4"	12.7 x 6.4	1/4"-20"	6.3-508	2.500"	64
2.188"	56	1/2" x 1/4"	12.7 x 6.4	3/8"-16"	9.5-406	3.250"	83

Vertical Shaft RPM	Percent Horsepower	Percent Thrust Capacity
	@1760 RPM	
430	38	160
580	46	145
690	53	137
720	54	135
870	61	126
960	65	122
1160	74	115
1460	89	106
1760	100	100
2000	105	96
2200	111	93

To obtain horsepower and thrust bearing ratings for speeds listed multiply the horsepower and the thrust bearing rating at 1760 rpm by percentage listed above.





OMNI GEAR®



E-mail: Sales@OmniGear.com Web: www.OmniGear.com
©2003 Omni Gear®, All rights reserved